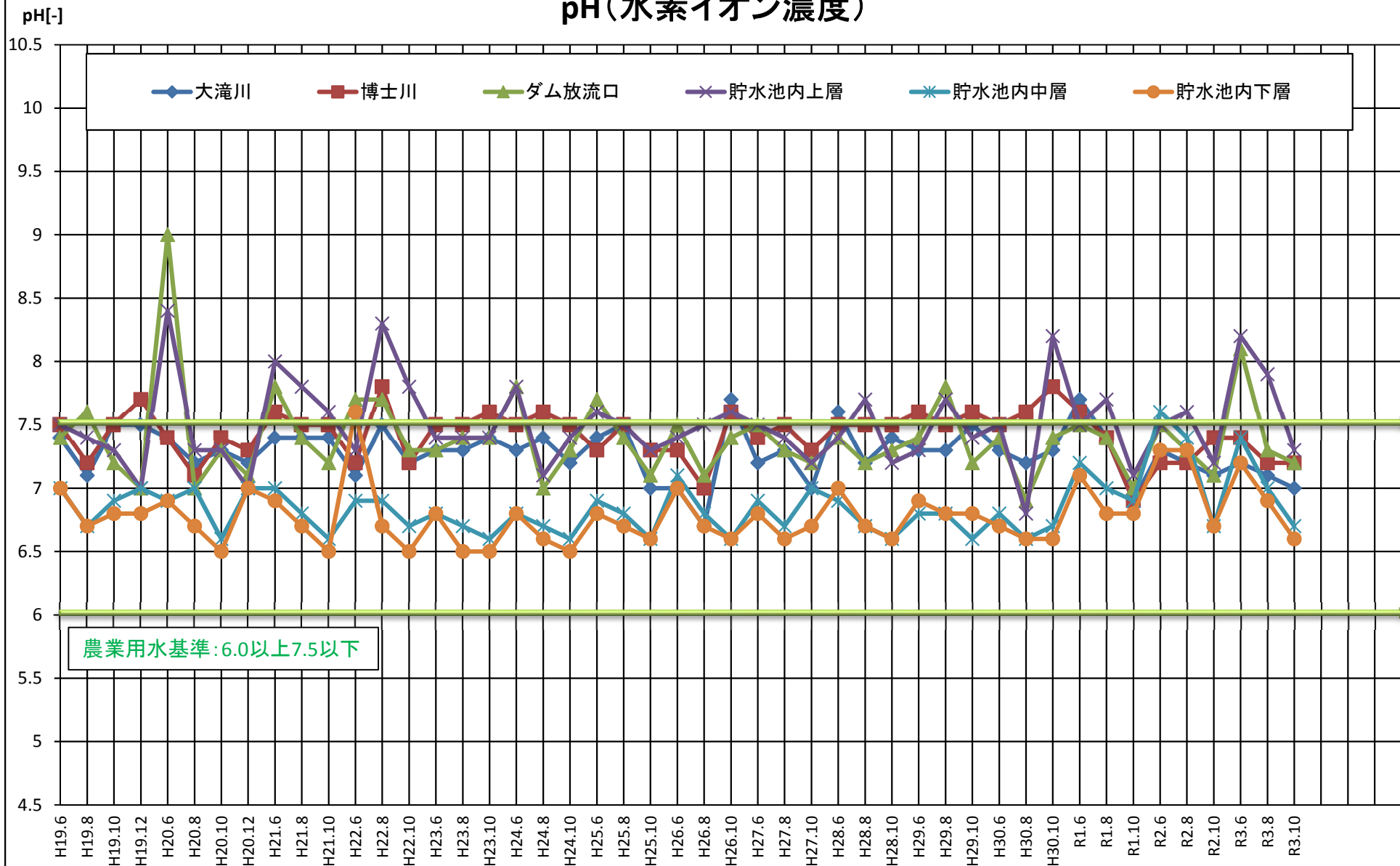


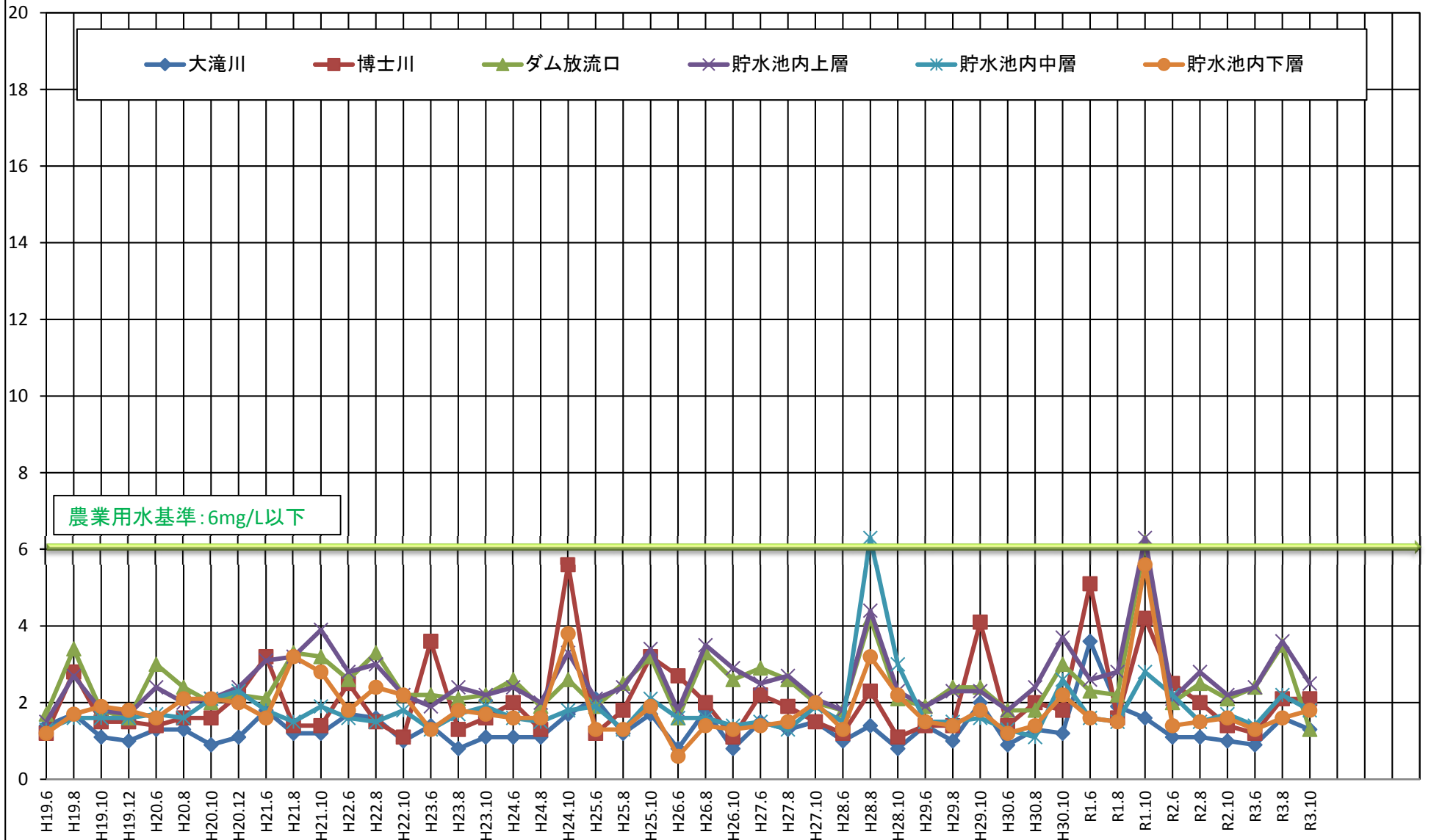
# pH(水素イオン濃度)



調査月

# COD(化学的酸素要求量)

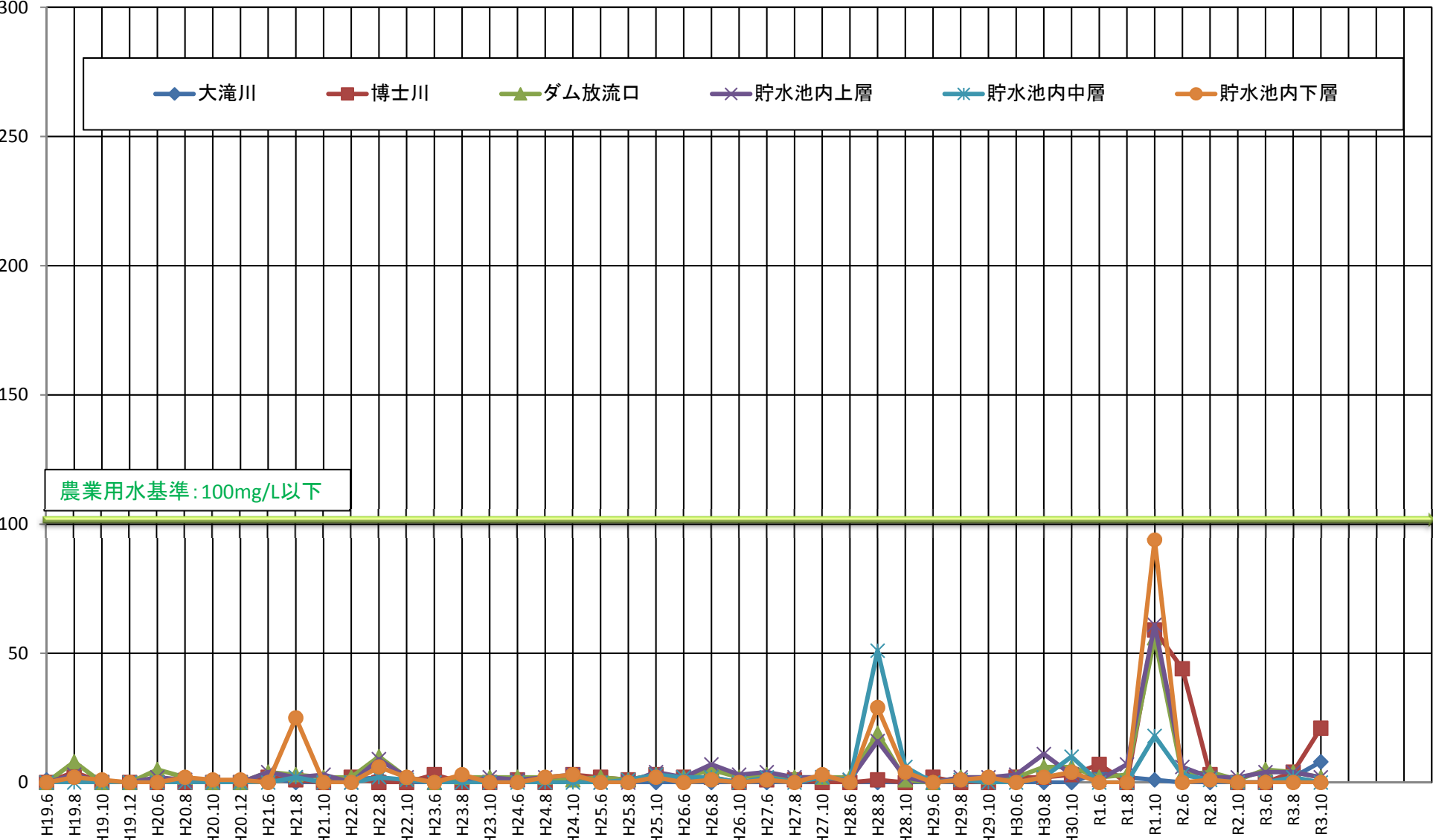
COD[mg/L]



調査月

# SS(浮遊物質量)

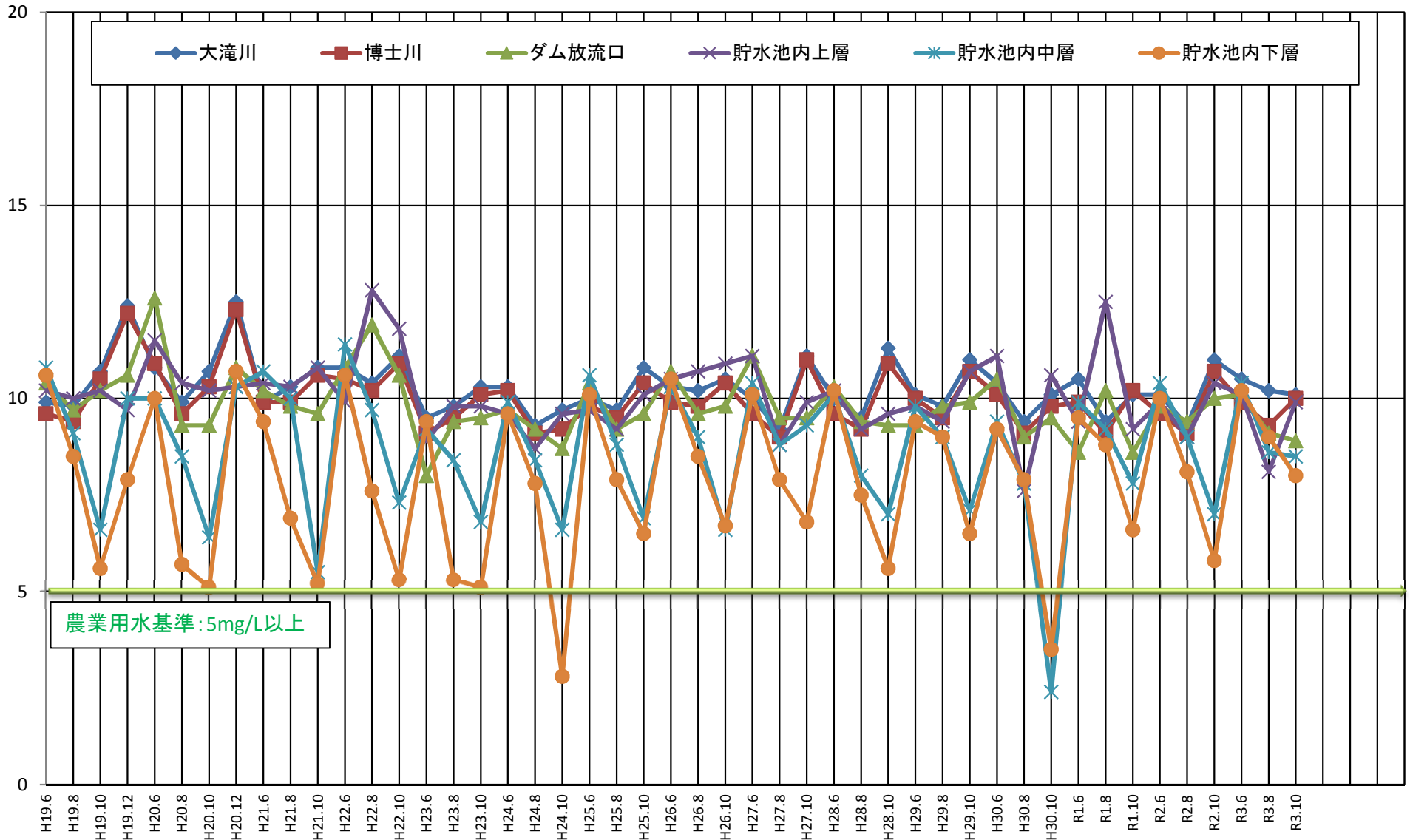
SS[mg/L]



調査月

# DO(溶存酸素量)

DO[mg/L]

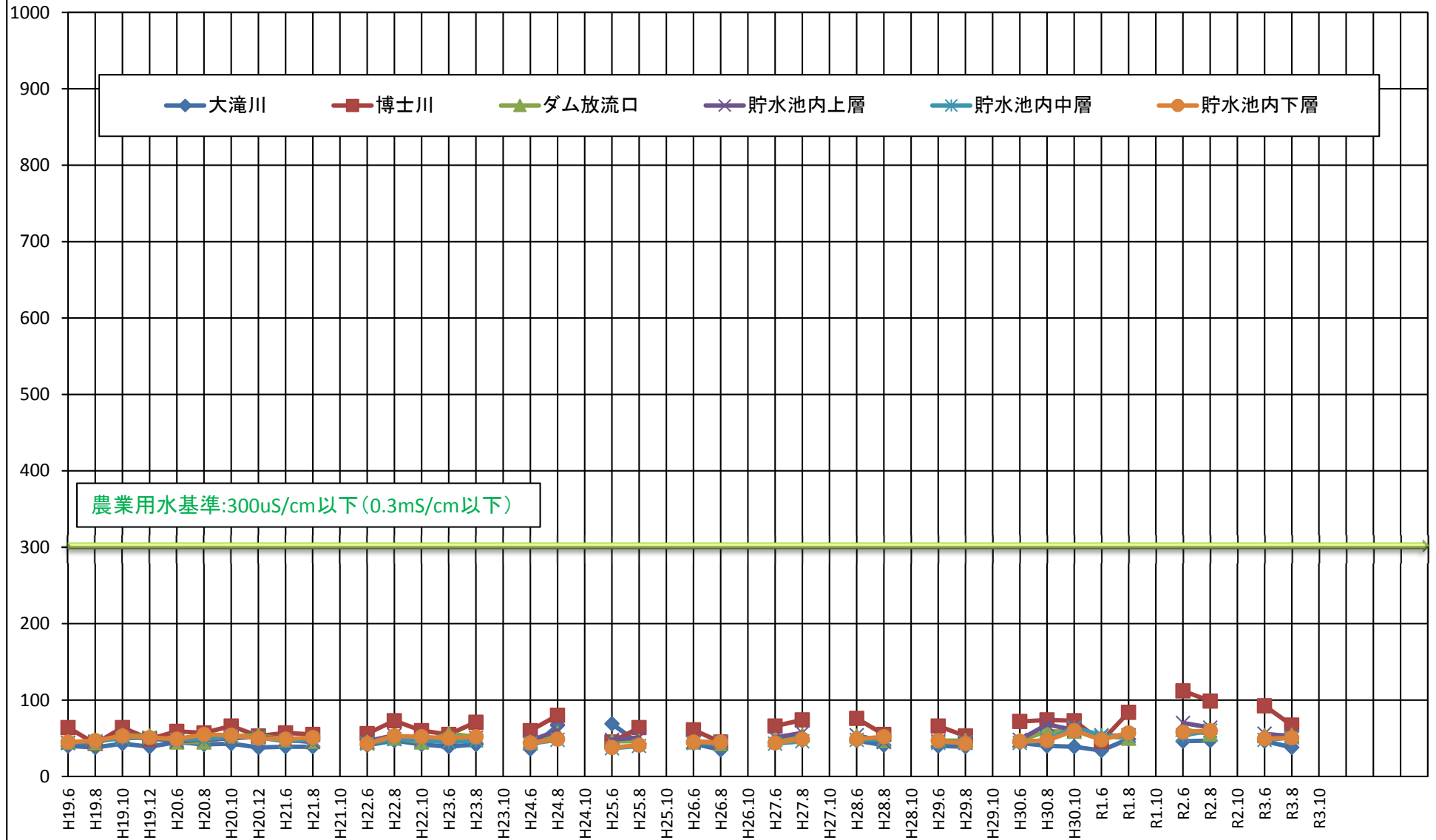


農業用水基準: 5mg/L以上

調査月

# 電気伝導度

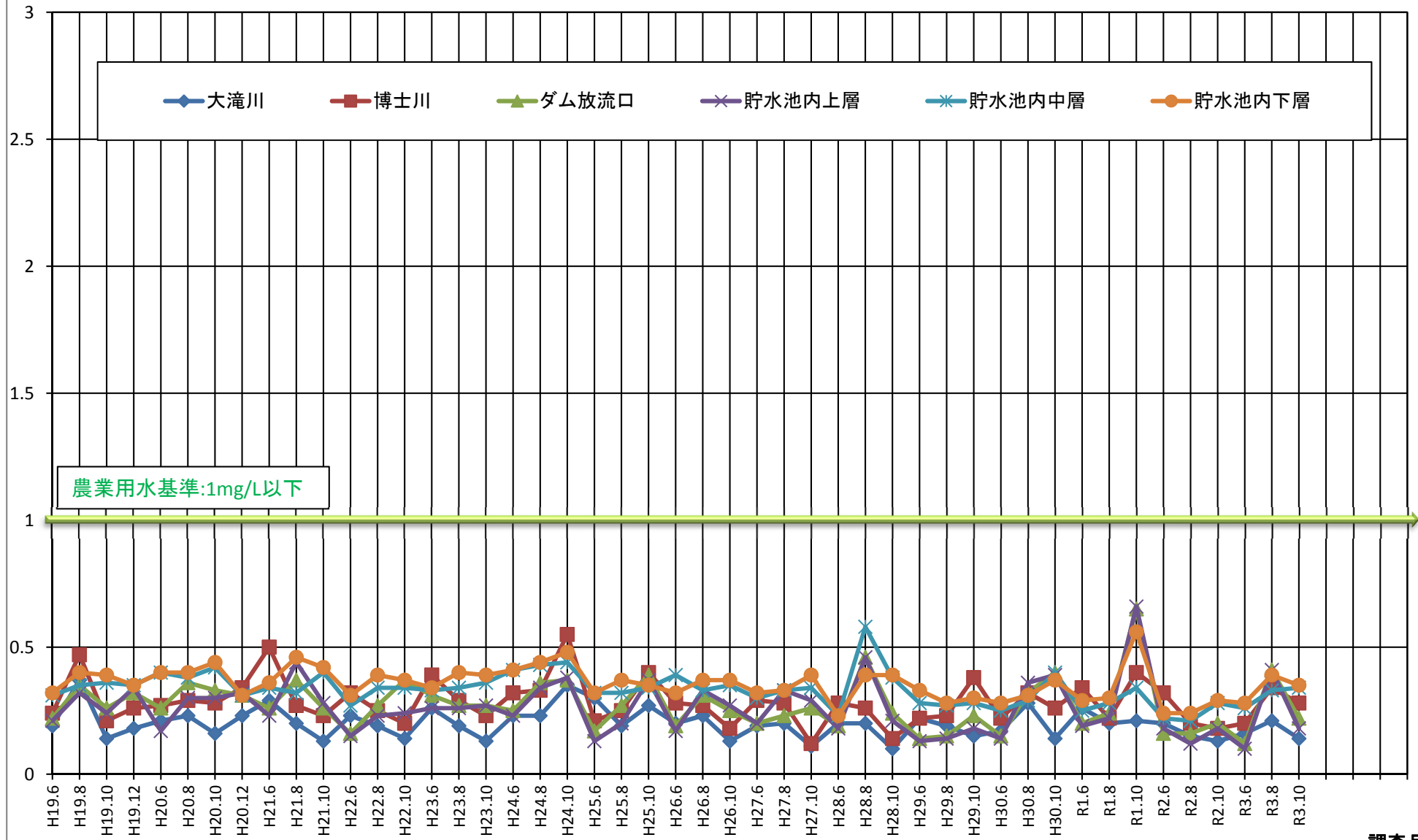
電気伝導度[mS/cm]



調査月

T-N[mg/L]

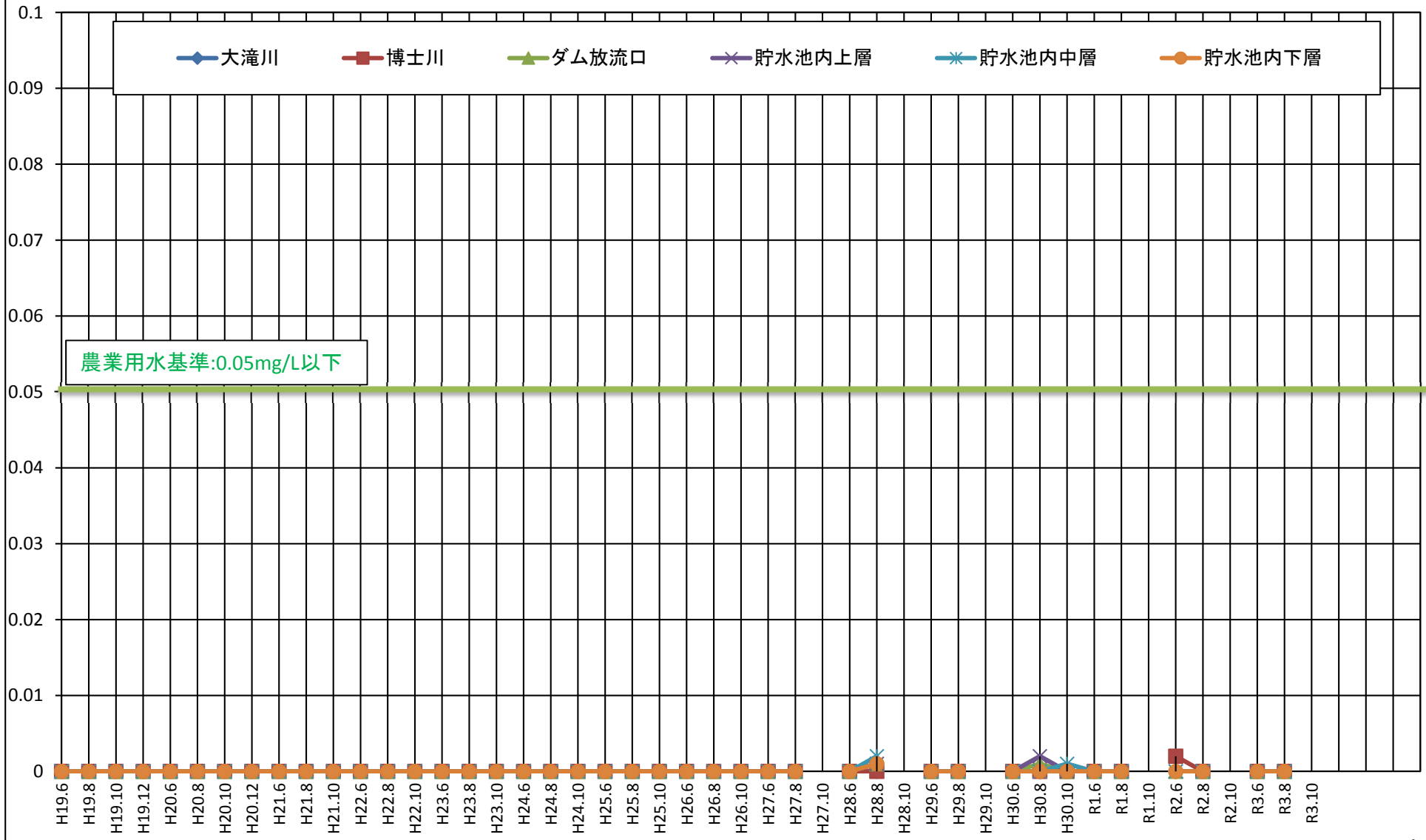
# T-N(全窒素)



調査月

# ヒ素

ヒ素[mg/L]



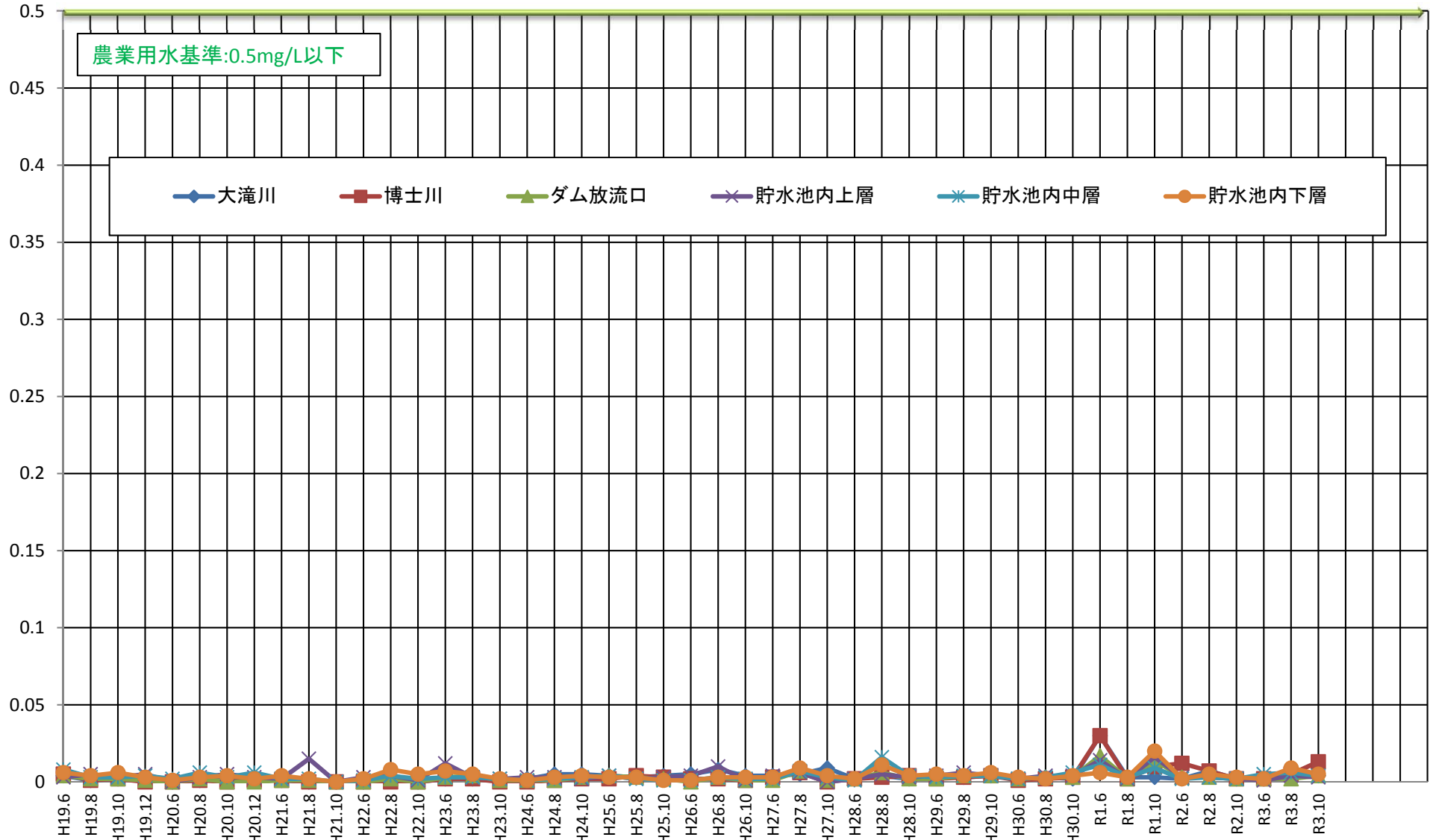
調査月

# 亜鉛

亜鉛[mg/L]

農業用水基準:0.5mg/L以下

大滝川 博士川 ダム放流口 貯水池内上層 貯水池内中層 貯水池内下層

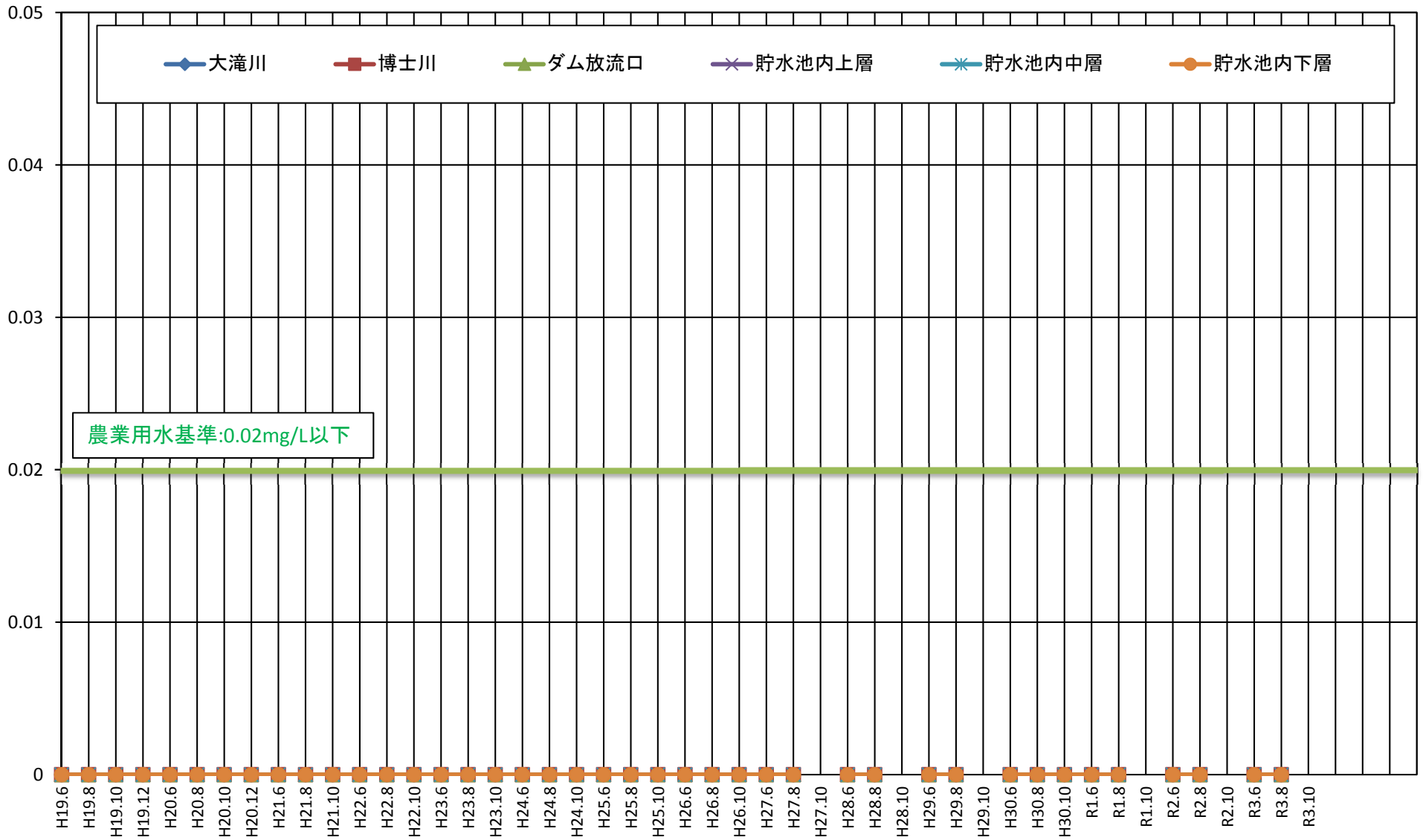


調査月



# 銅

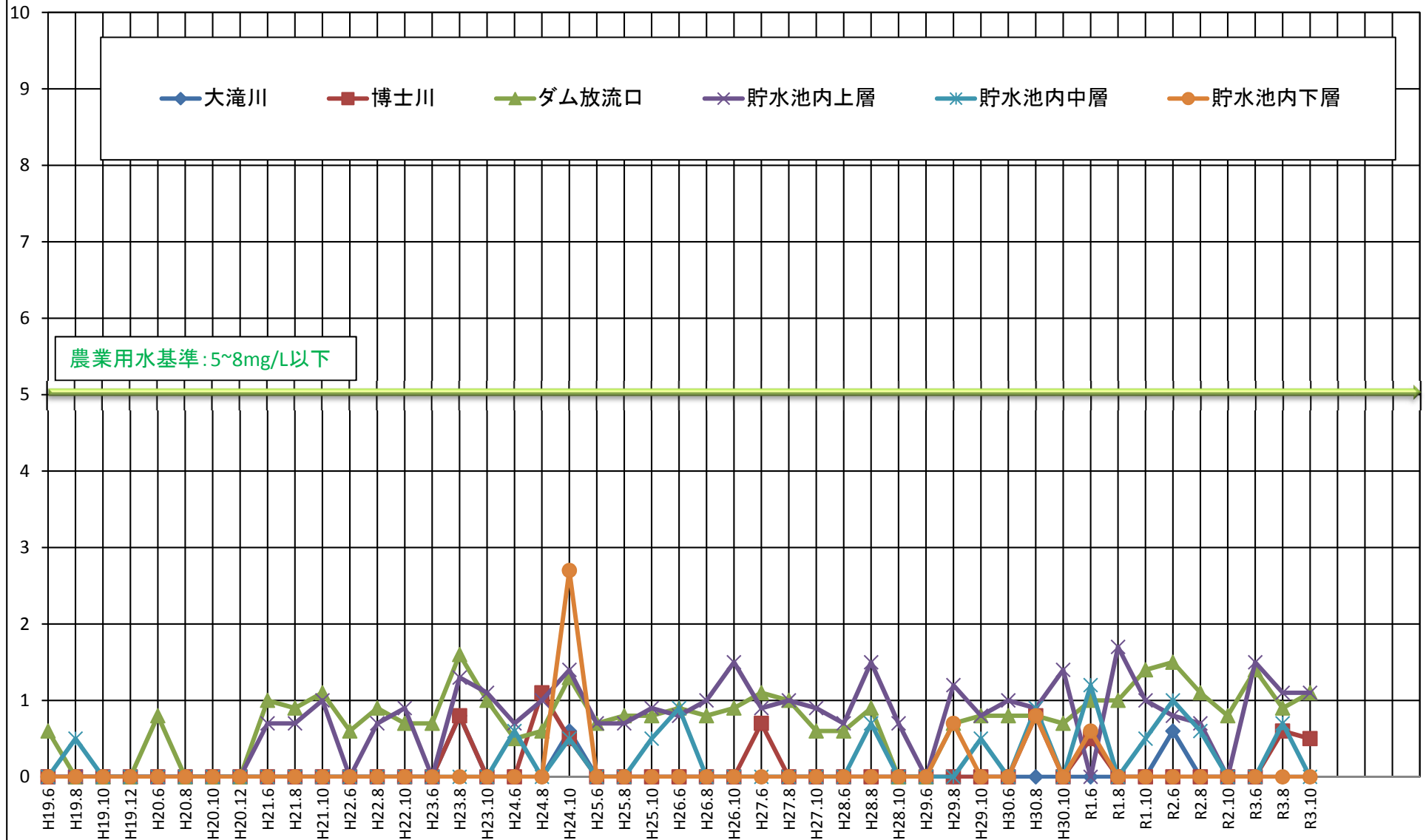
銅[mg/L]



調査月

BOD[mg/L]

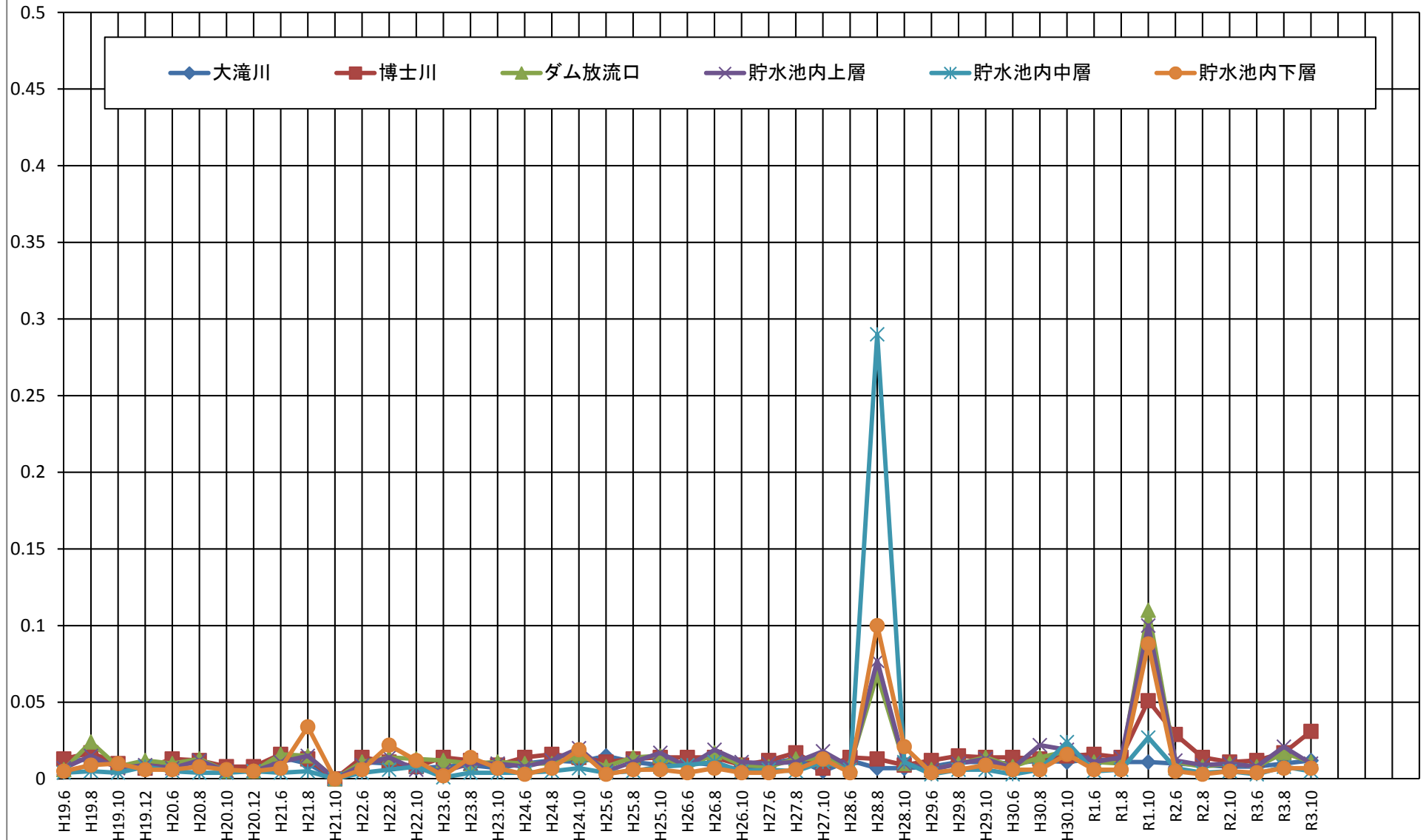
### BOD(生物化学的酸素要求量)



調査月

# T-P(全磷)

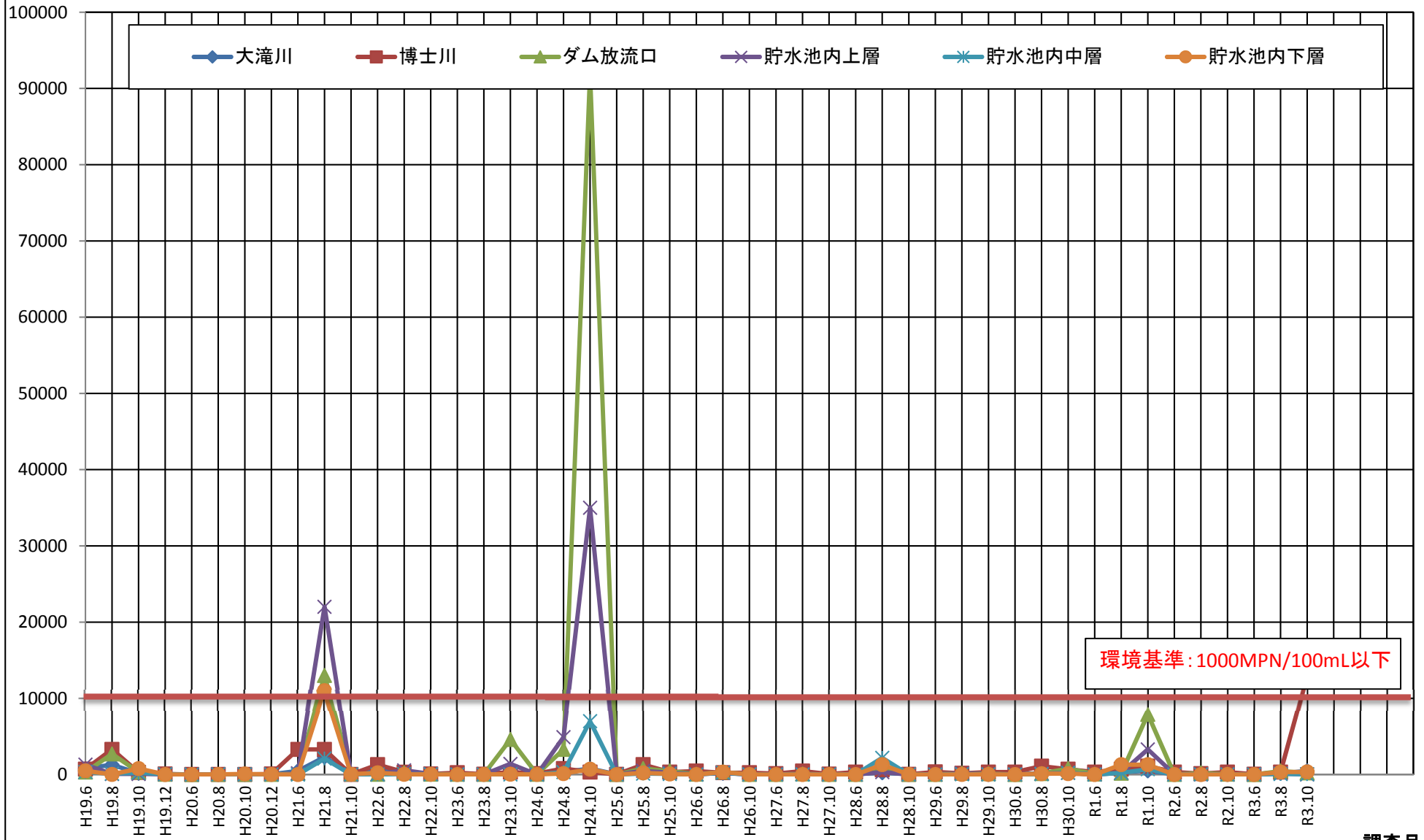
T-p[mg/L]



調査月

# 大腸菌群数

大腸菌群数[MPN/a00mL]

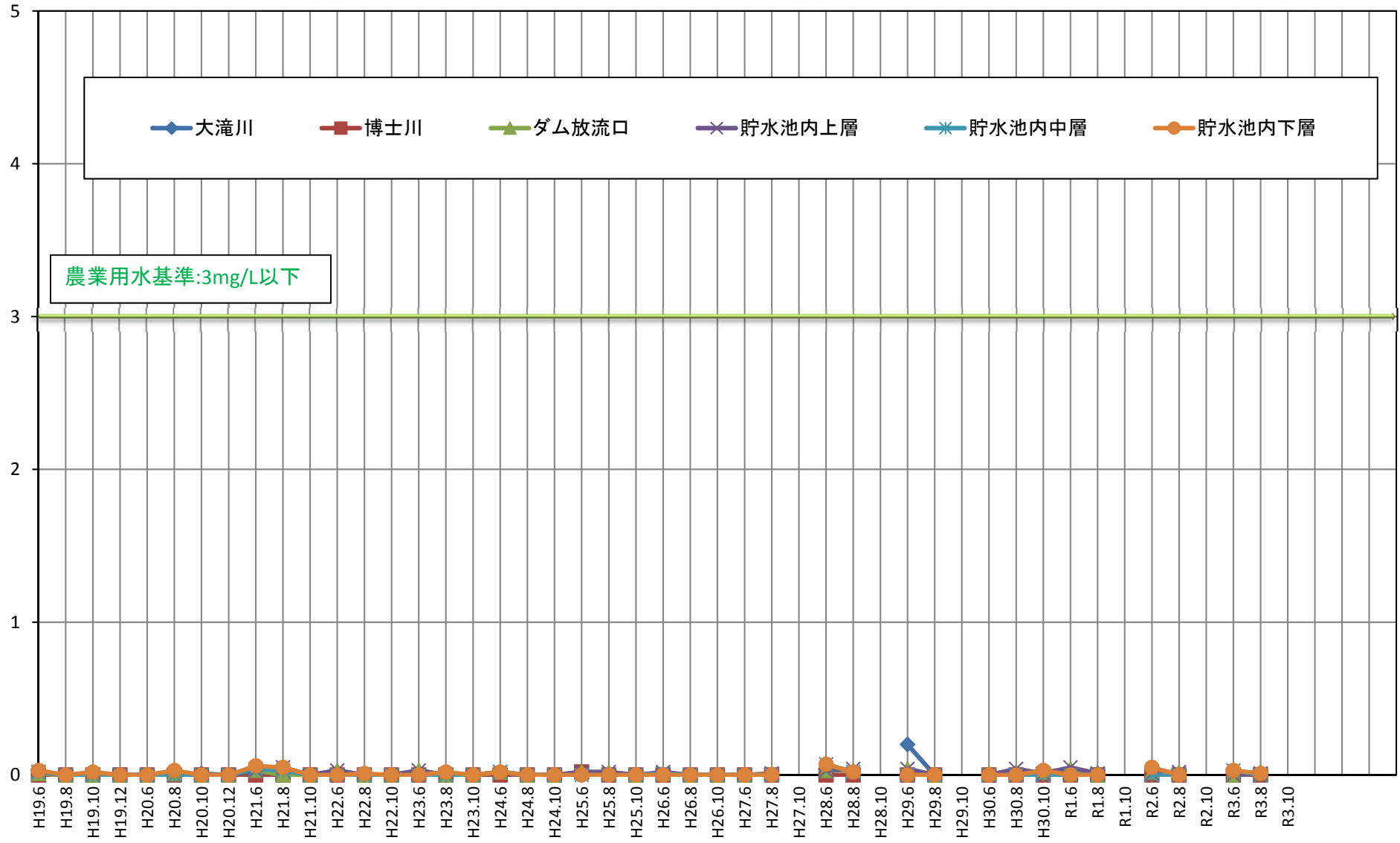


環境基準: 1000MPN/100mL以下

調査月

# アンモニア態窒素

アンモニア態窒素[mg/L]



農業用水基準:3mg/L以下

調査月